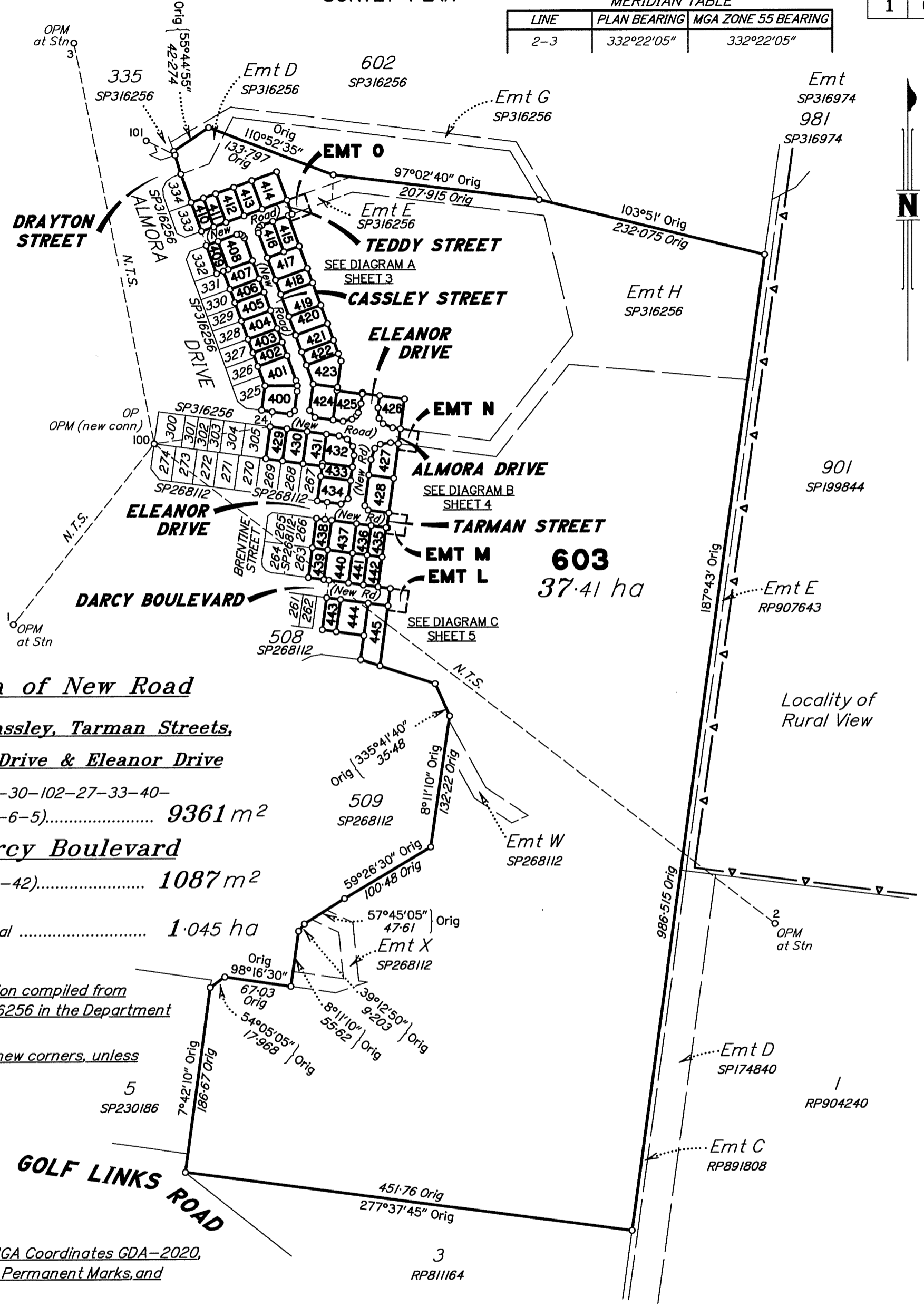


SURVEY PLAN

MERIDIAN TABLE

LINE	PLAN BEARING	MGA ZONE 55 BEARING
2-3	332°22'05"	332°22'05"



Area of New Road

Teddy, Cassley, Tarman Streets,

Almora Drive & Eleanor Drive

(5-12-10-D-20-30-102-27-33-40-38-26-24-E-8-6-5)..... 9361 m²

Darcy Boulevard

(42-P-S-44-42)..... 1087 m²

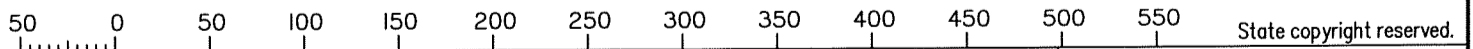
Total 1.045 ha

Original information compiled from SP268112 & SP316256 in the Department of Resources.

Peg placed at all new corners, unless otherwise stated.

See Sheet 6 for MGA Coordinates GDA-2020, Reference Marks, Permanent Marks, and Traverses Tables.

Scale 1: 4000 - Lengths are in Metres.



RPS Australia East Pty Ltd (ACN 140 292 762) hereby certify that the land comprised in this plan was surveyed by the corporation, by Ryan Tyler DI FILIPPO, surveying associate, for whose work the corporation accepts responsibility, under the supervision of Garry James DOBBIE, cadastral surveyor, and that the plan is accurate, that the said survey was performed in accordance with the Survey and Mapping Infrastructure Act 2003 and Surveyors Act 2003 and associated Regulations and Standards and that the said survey was completed on 12/02/2021.

G. Dobbie
Authorised Delegate

Date 8-3-2021

Plan of Lots 400-445 & 603
 Cancelling Lot 601 on SP316256 & Lot 507 on SP268112
and Emts L-0 in Lot 603

LOCAL GOVERNMENT: MACKAY REGIONAL COUNCIL
 LOCALITY: BEACONSFIELD

Meridian: MGA Zone 55 Vide Meridian Table
 Survey Records: No

Scale: 1:4000
 Format: STANDARD

SP168485

WARNING : Folded or Mutilated Plans will not be accepted.
Plans may be rolled.
Information may not be placed in the outer margins.

(Dealing No.)

4. Lodged by

(Include address, phone number, reference, and Lodger Code)

I. Existing		Created		
Title Reference	Description	New Lots	Road	Secondary Interests
50947640 51215637	Lot 507 on SP268112 Lot 601 on SP316256	421-428, 431-445 & 603 400-424, 429-431 & 603	New Rd New Rd	Emts L-N Emt O

MORTGAGE ALLOCATIONS

Mortgage	Lots Fully Encumbered	Lots Partially Encumbered
714420187	400-445 & 603	

ENCUMBRANCE EASEMENT ALLOCATIONS

Easement	Lots to be Encumbered
715753058 (Emts W & X on SP268112)	603
719979931 (Emts D, E & H on SP316256)	603
719979946 (Emt I on SP316256)	603

Easement 719979931 (Emt E on SP316256) partially absorbed by new road.

Easement 719979931 (Emt F on SP316256) fully absorbed by new road.

Easement 719979946 (Emt J on SP316256) to be surrendered prior to lodgement of this plan.

400-445 & 603	Por 285
Lots	Orig

2. Orig Grant Allocation :

3. References :

Dept File :
Local Govt :
Surveyor :

5. Passed & Endorsed :

By: RPS Australia East Pty Ltd
(ACN 140 292 762)
Date: 8-3-2021
Signed: *J. Robbi*
Designation: Cadastral Surveyor

6. Building Format Plans only.

I certify that :

- * As far as it is practical to determine, no part of the building shown on this plan encroaches onto adjoining lots or road;
- * Part of the building shown on this plan encroaches onto adjoining * lots and road

.....
Cadastral Surveyor/Director* Date

*delete words not required

7. Lodgement Fees :

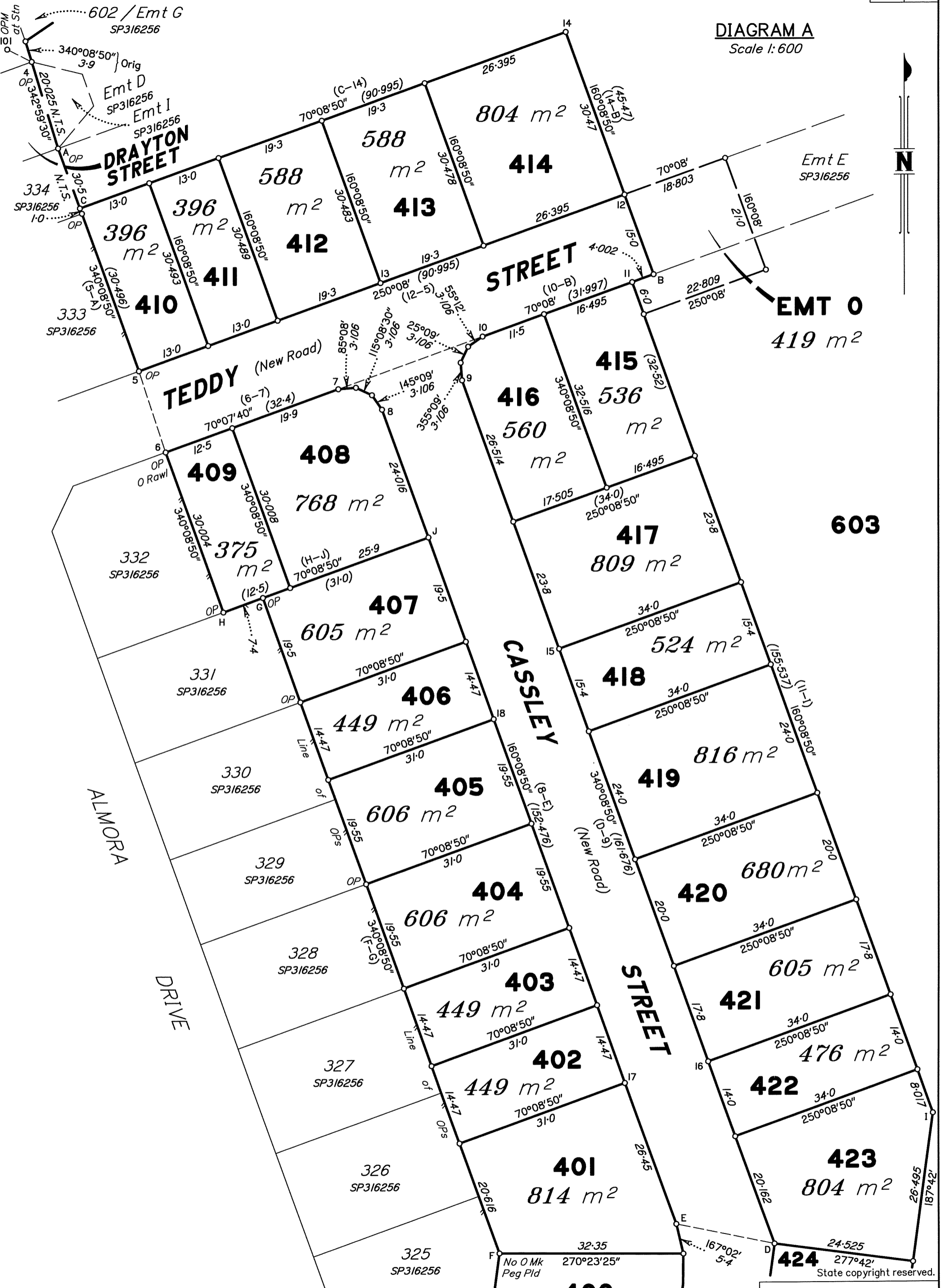
Survey Deposit	\$\$
Lodgement	\$\$
.....New Titles	\$\$
Photocopy	\$\$
Postage	\$\$
TOTAL	\$\$

8. Insert
Plan
Number

SP168485

DIAGRAM A

Scale 1: 600



Scale 1: 600 – Lengths are in Metres.



SEE DIAGRAM B
SHEET 4

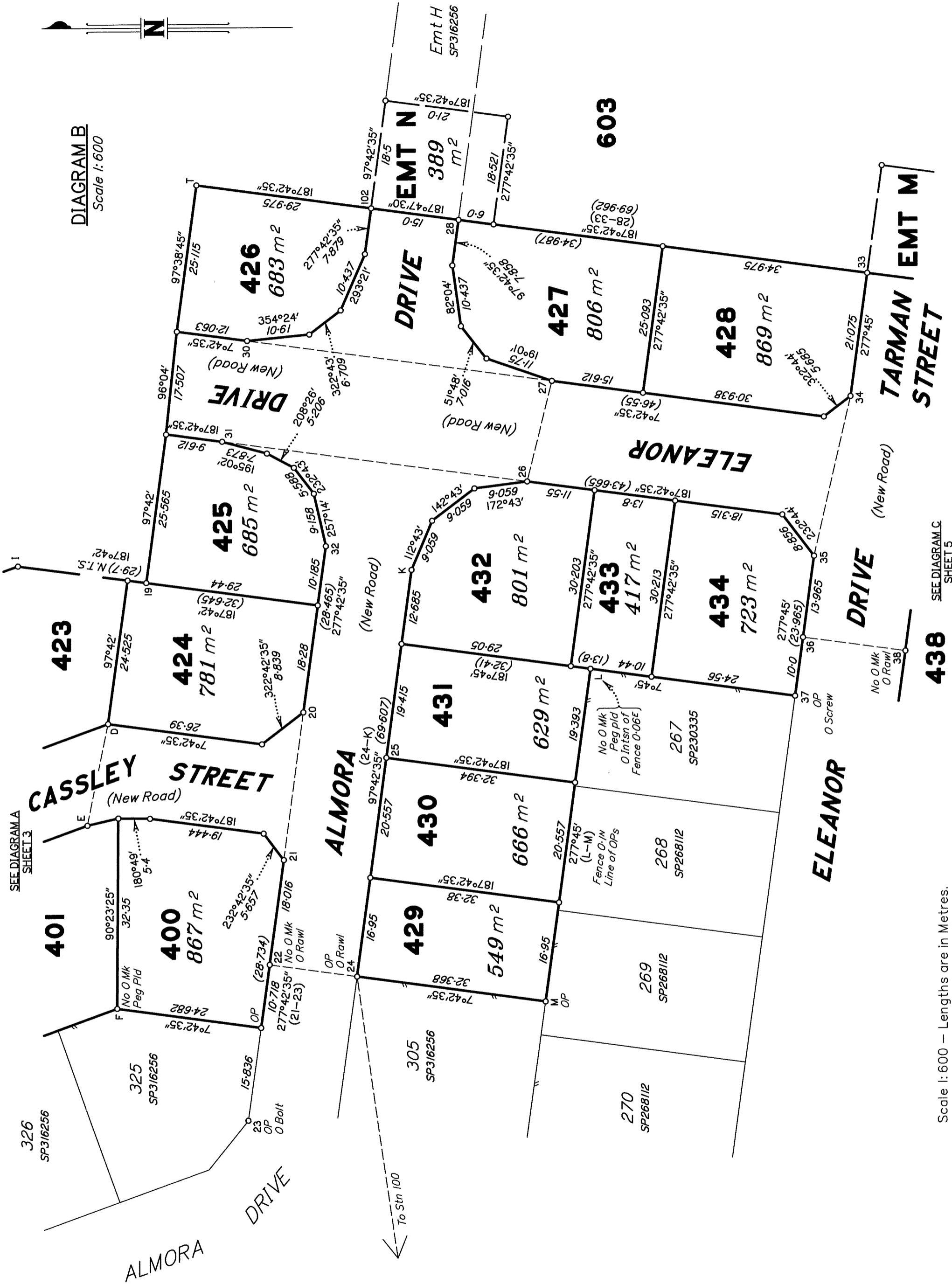
Insert
Plan
Number

SP168485

State copyright reserved.



DIAGRAM B
Scale 1:600



SEE DIAGRAM A
SHEET 3

SEE DIAGRAM C
SHEET 5

Scale 1:600 - Lengths are in Metres.



DIAGRAM C
Scale 1:600

603



Scale 1:600 - Lengths are in Metres.

SEE DIAGRAM B SHEET 4

428

ELEANOR DRIVE (New Road)

TARMAN STREET

BOULEVARD (New Road)

BRENTINE STREET

DARCY

State copyright reserved.

Insert Plan Number **SP168485**

0 50mm 100mm 150mm

M.G.A. COORDINATES GDA-2020

STATION	EASTING	NORTHING	ZONE	P.U.	LINEAGE	METHOD	REMARKS
1	724 088.03	7 667 014.68	55	0-04	Datum		OPM148314
2	725 545.219	7 666 851.893	55	0-017	Datum		OPM143664
3	724 198.177	7 669 424.978	55	0-016	Datum		OPM140649
100	724 558.94	7 667 618.01	55	0-02	Derived	Network RTK (Cors)	
101	724 569.18	7 667 912.84	55	0-02	Derived	Network RTK (Cors)	OPM198112
102	724 805.86	7 667 632.315	55	0-02	Derived	Network RTK (Cors)	

PERMANENT MARKS

PM	ORIGIN	BEARING	DIST	NO
1-OPM		at Station		148314
2-OPM		at Station		143664
3-OPM		at Station		140649
100-OPM (new conn)	SP266860	207°43'	20.708	191713
101-OPM	SP316256	at Station		198112

REFERENCE MARKS

STN	TO	ORIGIN	BEARING	DIST
6	O Rawl Pin in Kerb	SP316256	322°45'	4.86
8	Rawl Pin in Kerb		61°25'	3.895
9	Rawl Pin in Kerb		258°08'	3.81
11	NW Bolt of Street Light		306°20'	4.535
12	Rawl Pin in Kerb		213°05'	7.695
13	SE Bolt of Street Light		161°17'	6.55
14	Pin		289°18'	38.825
15	Rawl Pin in Kerb		255°30'	4.065
16	Rawl Pin in Kerb		279°0'	4.57
17	Rawl Pin in Kerb		44°50'	4.435
18	Rawl Pin in Kerb		52°33'	4.23
19	Pin		35°10'	18.19
22	O Rawl Pin in Kerb	SP316256	190°40'	4.665
23	O NW Bolt of Street Light	SP316256	188°04'	3.455
24	O Rawl Pin in Kerb	SP316256	327°37'	3.745
25	Rawl Pin in Kerb		343°14'	4.46
26	Rawl Pin in Kerb		22°20'	9.99
27	Rawl Pin in Kerb		348°33'	10.205
28	Rawl Pin in Kerb		345°42'	2.36
30	Rawl Pin in Kerb		218°23'	8.005
31	Rawl Pin in Kerb		165°02'	9.51
32	Sth Bolt of Streetlight		90°57'	13.515
33	Rawl Pin in Kerb		263°52'	16.55
35	Rawl Pin in Kerb		82°45'	5.14
37	O Screw in Channel	SP316256	176°06'40"	5.245
38	O Rawl in Footpath (Top broken off)	SP268112	268°30'40"	8.375
39	Nth Bolt of Streetlight		7°50'	7.015
40	Rawl Pin in Kerb		7°37'	2.29
41	SW Bolt of Streetlight		207°22'	5.275
42	O Rawl Pin in Kerb	SP268112	251°46'40"	12.62
43	O Rawl Pin in Kerb	SP268112	187°32'40"	5.64
44	Rawl Pin in Kerb		321°18'	7.665
45	Rawl Pin in Kerb		347°44'	5.665
46	O Rawl Pin in Hdwl (New Ref)	SP268112	132°40'	8.635
102	SW Bolt of Streetlight		201°27'	3.855

TRAVERSES ETC

LINE	BEARING	DISTANCE
4-101	296°37'45"	11.95
5-6	161°40'30"	15.005
7-10	70°08'30"	27.0
20-21	277°42'35"	25.25
22-24	187°42'35"	15.0
24-100	261°45'40"	117.52
26-27	103°49'30"	17.6
26-31	7°42'35"	52.333
27-30	7°42'35"	52.26
34-35	282°53'35"	27.9
36-38	187°45'	17.5
D-E	281°39'50"	17.595
42-44	187°45'	17.5

Reinstatement Report

All existing boundaries have been reinstated from the original corner and or reference marks found at these stations with exception of the boundaries between Lots 443-445 and Lot 508 on SP268112. These stations have been reinstated by setting out deed bearing and distance from station R. This agrees with the reinstated boundary dividing Lots 508 and 509 on SP268112. It should be noted that the O Rawl Pin off station 46 has a different reference to that shown on SP268112 and has been re-referenced. It appears the reference on SP268112 is incorrect, or the headwall has been shifted.